

TECHNO LUBRICATION SPECS FOR PREMIUM CLASS MACHINES

AVAILABLE ACCESSORIES

TECHNO LUBE KIT

PART NO.: H90Z00LUBEKIT3

PRICE: \$75.00

TECHNO GREASE GUN

PART NO.: HL5600M931170

PRICE: \$30.00

Y-Axis – THK Products

Grease: Lithium-based grease (JIS NO. 2) or Urea-based Grease (JIS No. 2), such as AFB Grease (THK), Alvania Grease No. 2 (Shell), Daphne Eponex Grease No. 2 (Idemitsu Kosan) or equivalent.

Oil: Sliding surface oil or turbine oil (ISOVG32-68), such as Super Multi 32 to 68 (Idemitsu Kosan), Vactra No. 2S (Mobile), DT Oil (Mobile), Tonner Oil (Shell) or equivalent.

TABLE 1

THK			
	BALLSCREW	RAIL	CARRIAGE
GREASE	√	√	√
OIL	√	√	

Note: On some items you can use either the grease or oil.

Premium Class LUBRICATION

PREMIUM CLASS MACHINE MAINTENANCE

For regular work loads, machine maintenance is required at least once a month. The machine should also be lubricated once it is received.

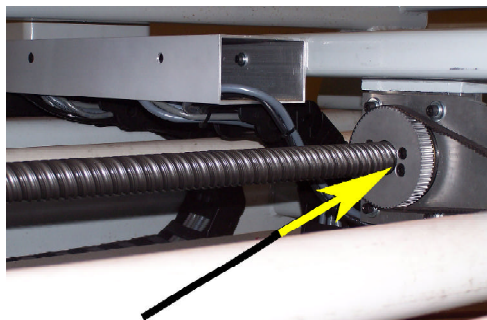
Warning: Before inserting any object into the machine, press the E-stop button.

Notes: Do not use WD-40 or silicon spray on the machine. It may damage the drive components of the machine.

Use the Grease and Oil recommendations listed on the previous page, paying close attention to what grease/oil must be used!

I. LONG AXIS (Y) BALL SCREW:

1. Clean the ball screw with a dry rag removing old grease and debris that may have collected.
2. Apply grease on the ball screw and run the machine back and forth several times to spread the grease out. By applying the grease and running the axis back and forth, small particles that may have collected in the ball nut may be flushed out. It is recommended to repeat steps 1 and 2 again.



LONG AXIS (Y)

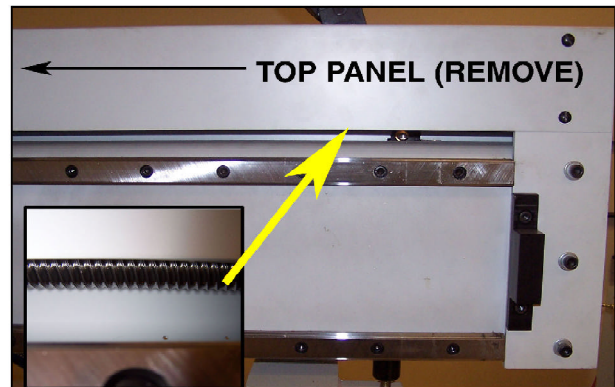
II. X-AXIS, Z-AXIS BALL SCREWS AND END BEARINGS:

Notes: To access the X-Axis you must first remove the top panel covering it. This can be done by unscrewing the screws on either side of the axis and lifting the panel completely off of the machine.

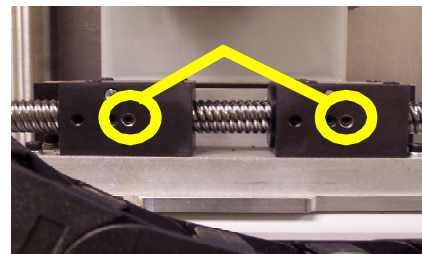
On the reverse side of the X-Axis are the Ball Nuts, remember to apply grease to those fittings!

1. Clean the ball screws with a dry rag, removing old grease and debris that may have collected.

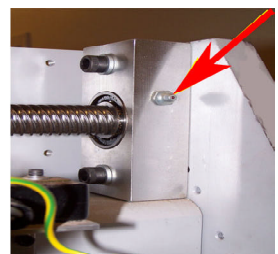
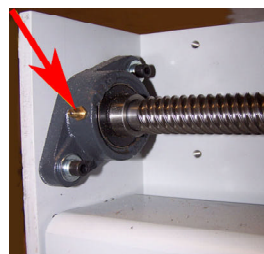
2. Apply grease to the the grease fittings on the ball nuts and the grease fittings located on the end bearings of the X-Axis and grease Z-Axis.
3. Run the machine back and forth along the axes several times to spread the grease out and complete the process.



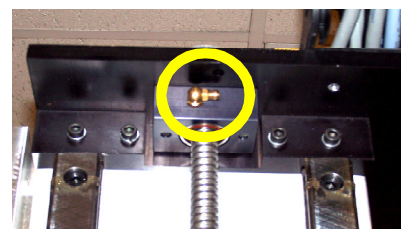
X-AXIS (FRONT VIEW)



**X-AXIS BALL NUTS
(REAR VIEW)**



**END BEARINGS
(REAR VIEWS OF X-AXIS)**



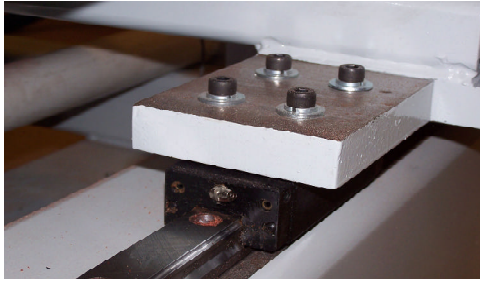
Z-AXIS END BEARING

Continue to next page ...

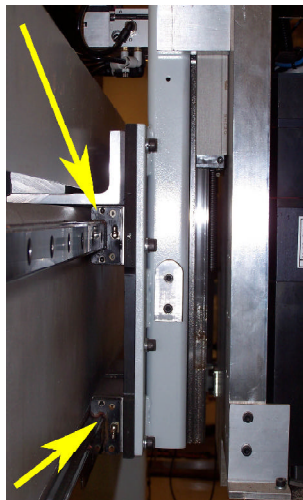
III. THK RAILS:

THK specifications indicate that a small amount of grease needs to be applied to the rails after 4 months of use.

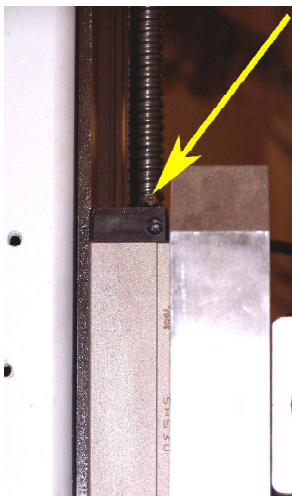
The following pictures indicate the location of the grease fittings. Be sure to grease all 4 fittings, on all three axes!



Y-AXIS RAIL
(ONE OF FOUR GREASE FITTINGS)



X-AXIS RAILS
(SIDE VIEW, TWO OF FOUR INCLUDING THE Z-AXIS)



Z-AXIS
(UPPER SIDE VIEW, ONE OF FOUR GREASE FITTINGS)